



AQUA CUBE +

The *Ultimate* Boot Washer

Operating Instructions



☎ 0411 074 205

✉ sales@jadeeng.com.au

AQUA CUBE +

Operating Instructions



- Provide to user
- Read carefully before use
- Keep safe for future use

Operating instructions	1
1. General provisions	2
1.1 Safety	2
1.1.1 Maintenance and monitoring	2
1.1.2 Using original parts	3
1.1.3 Operating the system	3
1.1.4 Other applicable documents and regulations	3
1.2 Intended use	3
1.2.1 Summary	4
1.3 Inappropriate use	4
2. Technical data	4
3. Design	5
4. Initial Operation	6
5. Operation	6
6. Maintenance and inspection	8
6.1 Safety measures	8
6.2 Maintenance and inspection table	8
6.3 Troubleshooting	8
7. Accessories/spare parts	9
7.1 Spare parts	9
7.2 Accessories	10
8. Decommissioning	11
9. Warranty	11

AQUA CUBE +

Operating Instructions

1. General Provisions

The premium boot cleaner is state-of-the-art technology and complies with approved technical safety regulations.

The boot cleaner may only be used in a technically flawless condition in the version delivered by the manufacturer.

For safety reasons, modifications to the boot cleaner are not permitted (except the addition of accessories specially provided by the manufacturer).

1.1 Safety

Each boot cleaner is tested for functionality and safety before dispatch.

When used as intended, the boot cleaner is safe to use.

Incorrect operation or misuse poses a dangerous risk to:

- Life and limb for the operator.
- The boot cleaner and other property belonging to the user,
- The functionality of the boot cleaner

In order to avoid risks to people, animals and property, please read these operating instructions prior to using the boot cleaner for the first time, in particular all safety instructions.

Ensure that:

- You understand all the safety instructions,
- The operator of the boot cleaner informed about the instructions and understands them,
- The operating instructions are to hand and placed near the boot cleaner.

1.1.1 Maintenance & Monitoring

The boot cleaner must be regularly checked to ensure it is in a safe condition.

This check shall include:

- Visual inspection for leaks,
- A functional test,
- Firm fit of the floor mounting (accessory).

AQUA CUBE +

Operating Instructions

1.2 Using Original Parts

Please only use original parts provided or recommended by the manufacturer.

Also take note of all safety and usage information provided with these parts.

This applies to:

- Spare parts and wear parts,
- Parts for accessories

1.1.3 Operating the System

In order to avoid any hazards due to incorrect operation, the boot cleaner may only be used by individuals who:

- Have read and understood the instructions.
- Have proven their ability to operate the equipment
- Have been assigned to use the equipment.
- Have the physical capabilities to use the boot cleaner.



Important:

The operating instructions must be easily accessible for each user.

1.1.4 Other Applicable Documents & Regulations

- Country-specific regulations and laws
- Regulations of the water supply company

1.2 Intended Use

The intended use of the premium boot cleaner is exclusively to clean dirty footwear (boots) suitable for cleaning with water.

The maximum water temperature must not exceed 40°C.

Only for use with water without additives.



AQUA CUBE +

Operating Instructions

1.2.1 Summary

Any other use is not intended!

For safety reasons, modifications to the boot cleaner are not allowed (except for the addition of accessories specially provided by the manufacturer). The intended use assumes compliance with all information in these operating instructions.

1.3 Inappropriate Use



Important:

Inappropriate use also includes failure to comply with the information in these operating instructions.

It also includes:

- Non-observance of the respective applicable national regulations.
- Use of liquids other than those stipulated under intended use, e.g.: additives such as disinfectant

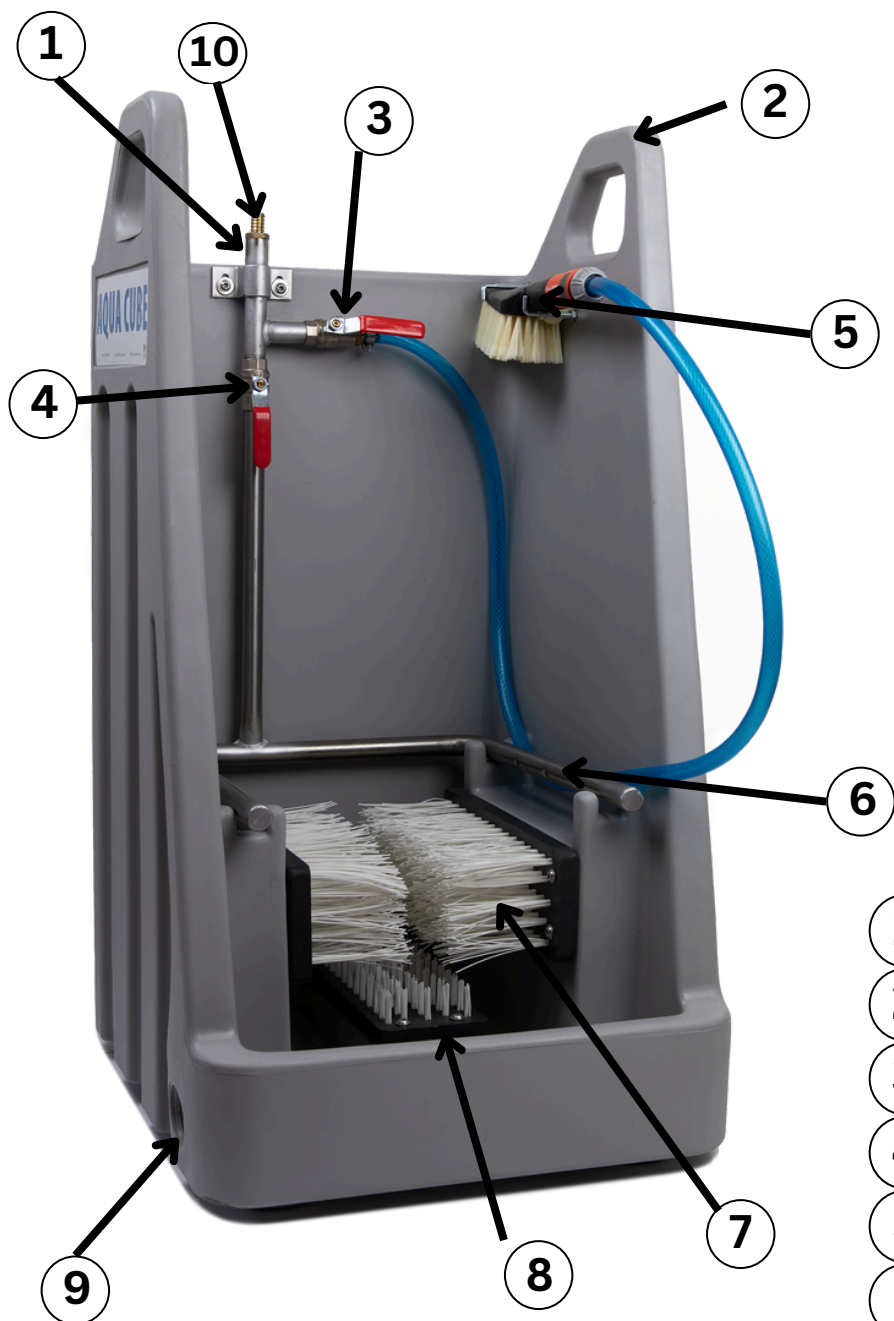
2. Technical Data

	Premium Boot Cleaner
Dimensions [cm]	
- Length	52
- Width	47
- Height	90
Weight [kg]	15
Hose Connection [“]	½
Outlet Connection [“]	1 ½
Max. operating pressure [bar]:	6
Max. water temperature [°C]	40
Stationary brushes	3
Moveable Hand Brush	1
Pipes:	Stainless Steel
Handles:	Integrated
Ball Valve:	2x
Scraper Grate for Coarse Dirt	Accessory

AQUA CUBE +

Operating Instructions

3. Design



- ① Connection for 1/2" hose
- ② Handles
- ③ Ball valve hand brush
- ④ Ball Valve Stationary Brush
- ⑤ Movable Hand Brush
- ⑥ Water outlet pipe
- ⑦ Side stationary brush
- ⑧ Bottom Stationary Brush
- ⑨ Wastewater drain
- ⑩ Hose clamp (2 Nm)

AQUA CUBE +

Operating Instructions

4. Initial Operation

The boot cleaner must be placed on a level, non-slip and horizontal surface.

The unit must not be connected directly to the public drinking network.

The regulations of the water supply company must be observed.

The connection is made via a water hose which is attached to the 1/2 " hose nozzle with a hose clamp.

The tightening torque of the hose clamp is 2 Nm.

5. Operation

The boot cleaner should not be exposed to direct sunlight for long periods of time.

Excessive heating can lead to deformation of the high-quality plastic housing.

Suitable operating conditions are at 0°C to max +40°C.

If there is a risk of frost, disconnect the boot cleaner from the water supply and empty it.

The water supply to the stationary brushes and to the hand brush can be controlled separately via a ball valve.

Water is applied to the brushes at an angle from above through 3 holes on each side of the water outlet pipe.

The wastewater is discharged on the left side (1 1/2" thread).

The wastewater generated must be disposed of in accordance with local environmental regulations.

The sole and sides of the boots can be cleaned with the 3 stationary brushes.

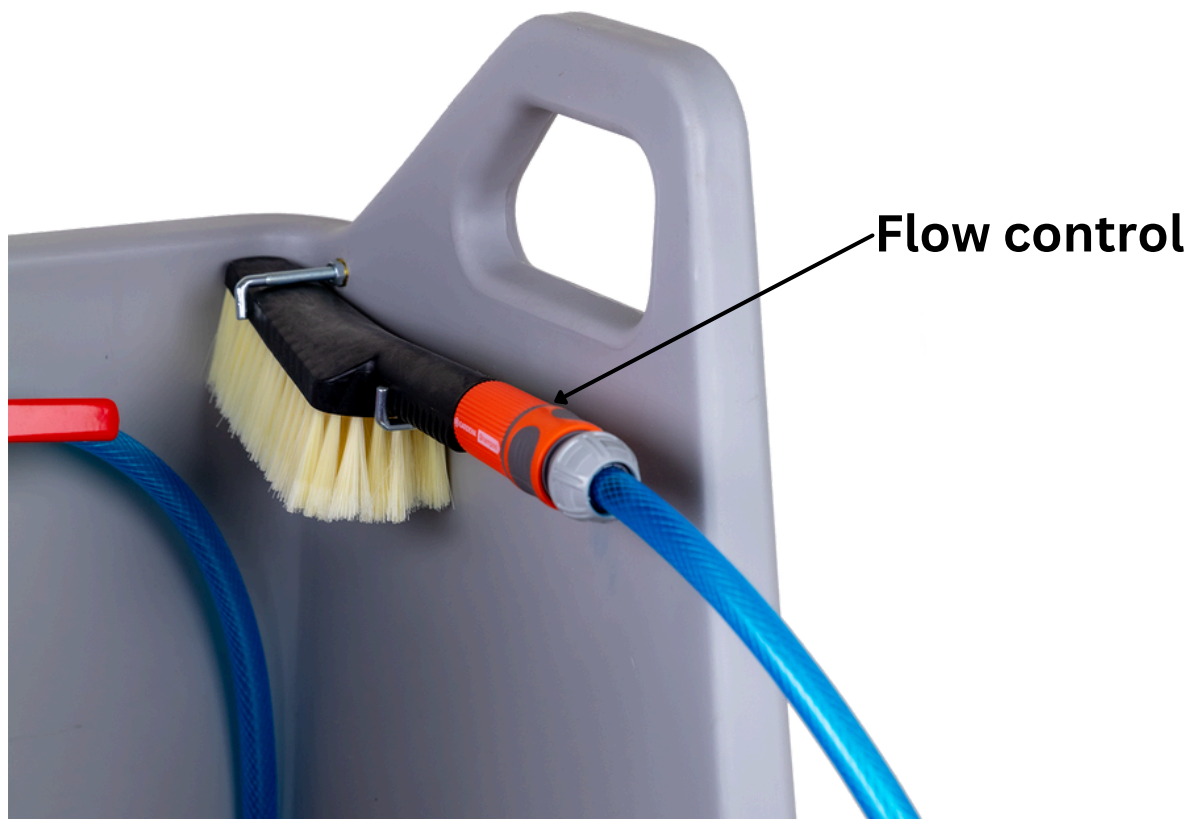
AQUA CUBE +

Operating Instructions

To clean the boot shaft, also use the movable hand brush.

The water flow of the movable hand brush can be changed by turning the orange handle.

The hand brush can be mounted as shown in the picture.



Make sure that it is in a secure position when in use, and use the integrated handles.

Close the ball valves after use.

AQUA CUBE +

Operating Instructions

6. Maintenance & Inspection

6.1 Safety Measures



Important:

The operator must provide any protective clothing that may be required.

Who can carry out maintenance and inspection work?

- Normal maintenance work can be carried out by trained operating personnel.

6.2 Maintenance & Inspection Table

Interval	Assembly	Action
Before use	Wall Mounting	Check for tight fit
As required	Inside and outside of boot cleaner	Remove any dirt that has accumulated
Monthly	Housing	Visual Check for Damage
	Line/hose system	Check hoses for cracks & porosity, check fittings for leaks (replace defective parts).
	Hose clamp	Check for tight fit

6.3 Troubleshooting

Fault	Possible Cause	Solution
No or not enough water from the hand brush	Ball Valve Closed	Open ball valve
	Hose kinked	Remove kink
	Flow control on the hand brush closed	Open the flow control on the hand brush



AQUA CUBE +

Operating Instructions

7. Accessories/Spare Parts

7.1 Spare Parts

Spare Hand Brush

- **Waterfeed** with **flow valve**
- Simple installation

Product Code: **WF01**



- **Waterfeed** with non flow valve
- Hard and Sturdy Bristles ensures a deep clean

Product Code: **WF03**



Spare Brush Set

- **Hardy Bristles** for reliable cleaning
- Easy and Hassle-free installation

Product Code: **AQCBR**



AQUA CUBE +

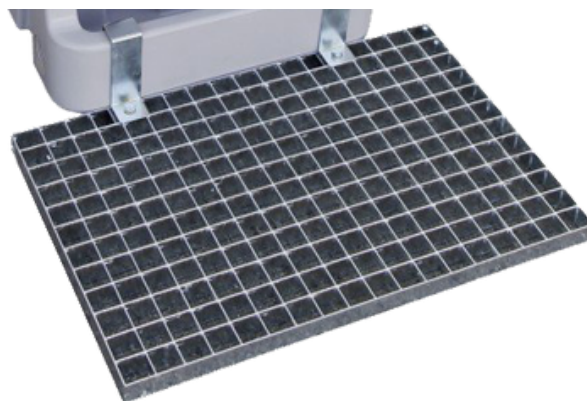
Operating Instructions

7.2 Accessories

Metal Grate

For Aqua Cube

- **Sturdy** Metal Construction
- Scrapes off **Heavy Soiling**
- **Simple installation** into existing Aqua Cube systems
- **Best** for the Mining Industry



Product Code: **AQCGR**

Sanitiser Dosing Unit

- **Easily** configure dilutions using the broad range of included coloured tips
- Small and **compact** size makes installation easy

Product Code: **DMDSWL**



AQUA CUBE +

Operating Instructions

8. Decommissioning

1. Drain the system completely.
2. Disassemble the system into its constituent parts.
3. Sort according to material characteristics.
4. Dispose of in compliance with local regulations.

9. Warranty

Under our general terms and conditions of trade, we guarantee that the boot cleaner will be produced free from defects in materials, functionality or workmanship.

These can be viewed at:

<https://www.fmcgis.com.au/termsandconditions/>

The warranty applies only under the condition that the above operating and maintenance instructions and all applicable regulations are closely followed.

Any modification of the boot cleaner by the customer without consultation with the company FMCG Industry Solutions shall invalidate any claims under the statutory warranty.

FMCG Industry Solutions also accepts no responsibility for damage caused by inappropriate use.